

## Criteria –II

### Teaching Learning and Evaluation

Table No.-01  
Respondent opinion by Category wise.

Category	Frequency	Percentage
SC	12	15 %
ST	01	1.3 %
OBC	50	62.5 %
MINORITY	02	02.5 %
GM	15	18.8 %

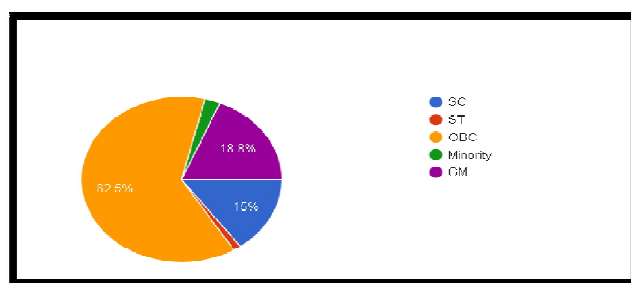


Table No.-02  
Respondents studying in the programme

Programme	Frequency	Percentage
UG – ARTS	22	27.5 %
UG – COMMERCE	46	57.5 %
PG – MA MUSIC	9	11.3 %
PG – COMMERCE	3	3.7 %

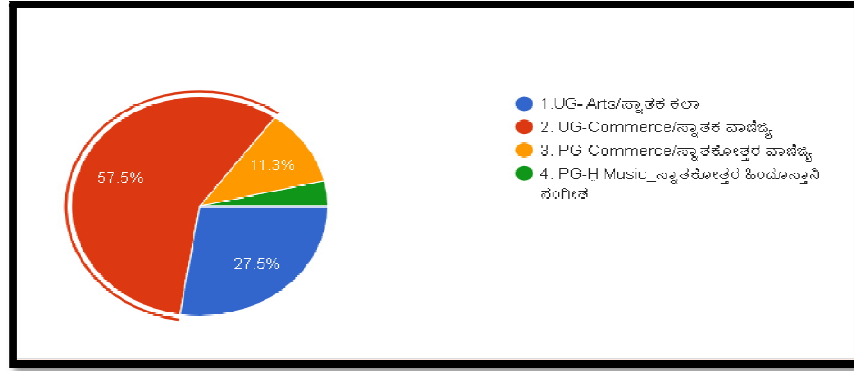


Table No.-03

**Students opinion about teachers covered syllabus in the class**

Syllabus	Frequency	Percentage
4	60	75 %
3	19	23.8 %
2	01	1.2 %
1	00	00 %

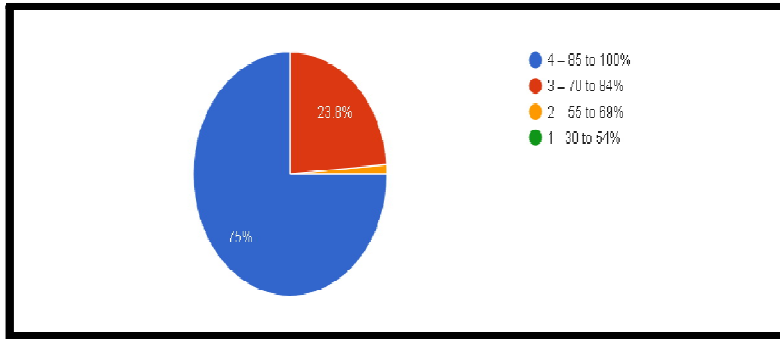


Table No - 04

**Students opinion about teacher's preparedness of the class**

Preparation	Frequency	Percentage
Thoroughly	44	55 %
Satisfactorily	35	43.8 %
Poorly	1	1.2 %
Indifferently	0	0
Won't teach at all	0	0

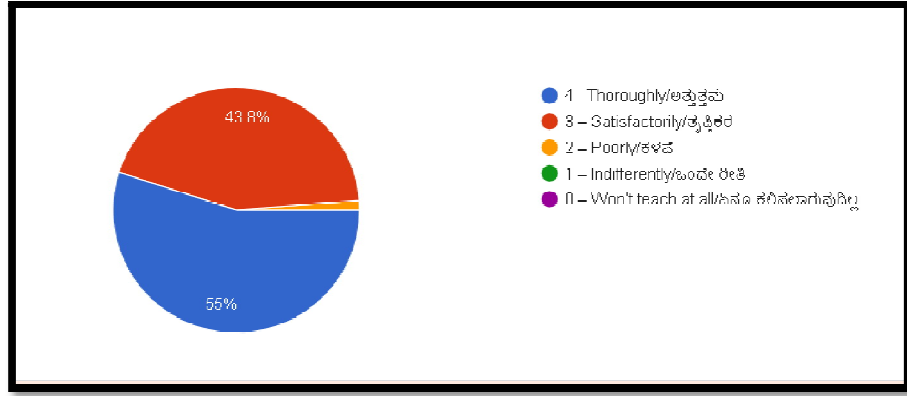


Table No.-05

**Teachers able to communicate with the students**

Preparation	Frequency	Percentage
Always effective	47	58.8 %
Sometimes effective	8	10 %
Satisfactorily	23	28.7 %
Generally ineffective	1	1.2 %
Very poor communication	1	1.2 %

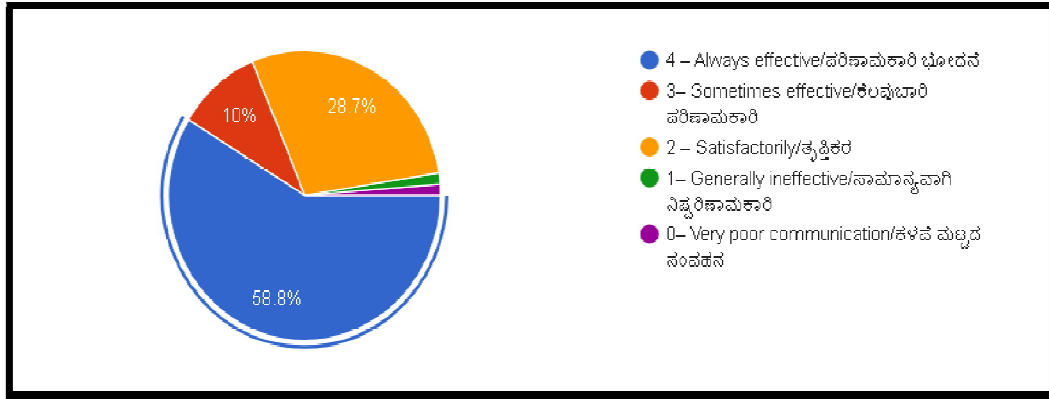


Table No - 06

**Teachers approach with the students**

Preparation	Frequency	Percentage
Excellent	33	41.3 %
Very good	39	48.7 %
Good	7	8.8 %
Fair	1	1.2 %
Poor	0	0

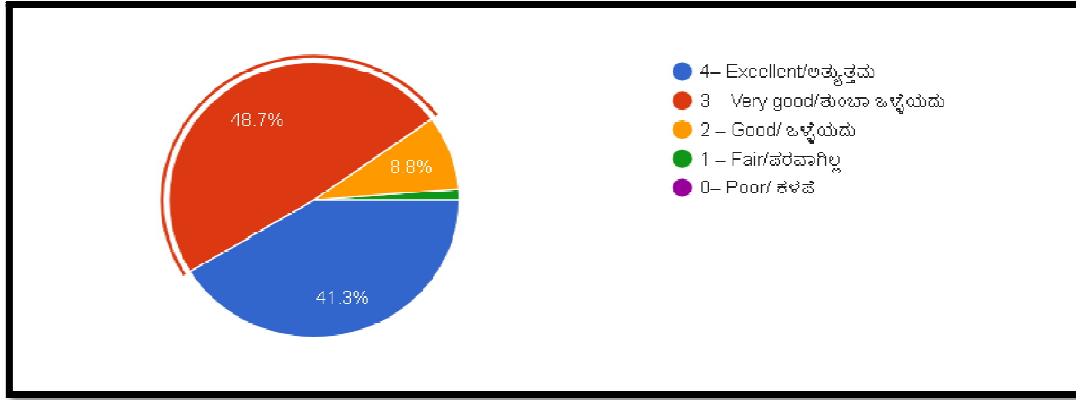


Table No.- 07

**Students opinion about internal evaluation processes by the teachers**

Preparation	Frequency	Percentage
Always fair	50	62.5 %
Usually fair	21	26.2 %
Sometimes unfair	6	7.5 %
Usually unfair	0	0
Unfair	3	3.7 %

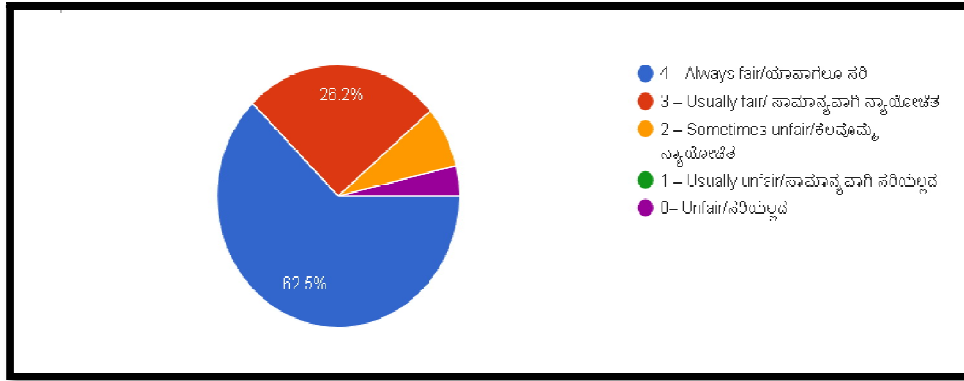


Table No.- 08

**Assignments discussed with the students from the teachers**

Performance	Frequency	Percentage
Every time	56	70 %
Usually	18	22.5 %
Occasionally	04	5 %
Rarely	1	1.2 %
Never	1	1.2 %



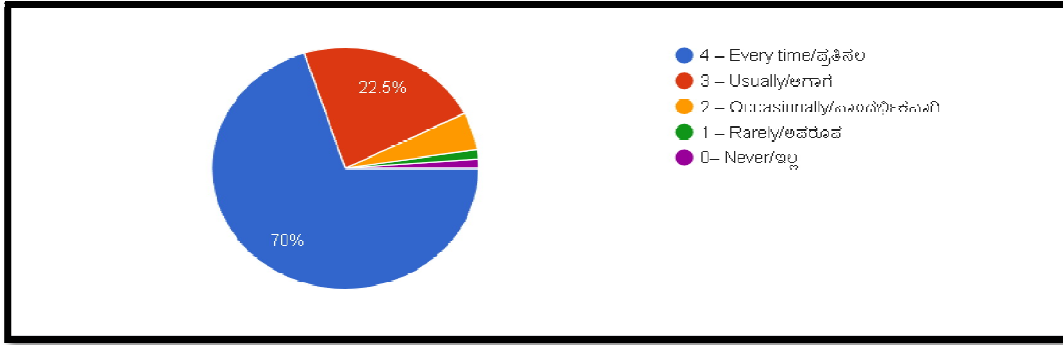


Table No.- 09

The institute takes active interest in promoting internship, field visit opportunities for students.

Opportunities	Frequency	Percentage
Regularly	38	47.5 %
Often	18	22.5 %
Sometimes	16	20 %
Rarely	3	3.7 %
Never	5	6.3 %

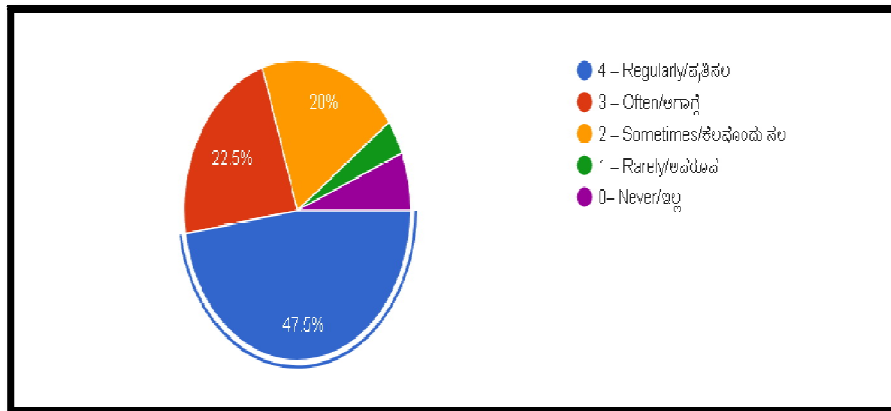


Table No.- 10

Students opinion about teaching and mentoring process in the institute

Mentoring	Frequency	Percentage
Significantly	35	43.8 %
Very well	37	46.3 %
Moderately	7	8.8 %
Marginally	1	1.2 %
Not at all	0	0

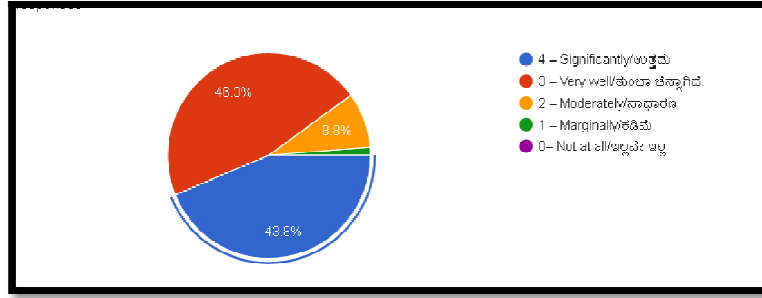


Table No.- 11

**Students opinion about teaching and mentoring process in the institute**

Opportunities	Frequency	Percentage
Strongly agree	37	46 %
Agree	38	48 %
Neutral	5	6 %
Disagree	0	0
Strongly disagree	0	0

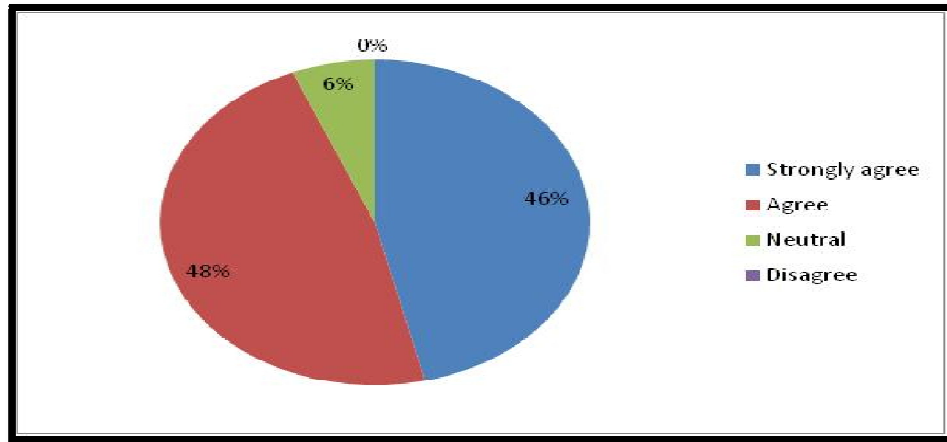


Table No.- 12

**Teachers inform you about your expected competencies, course outcomes and programme outcomes.**

Competency	Frequency	Percentage
Every time	43	54 %
Usually	28	35 %
Occasionally	05	6 %
Rarely	03	4 %
Never	01	1 %

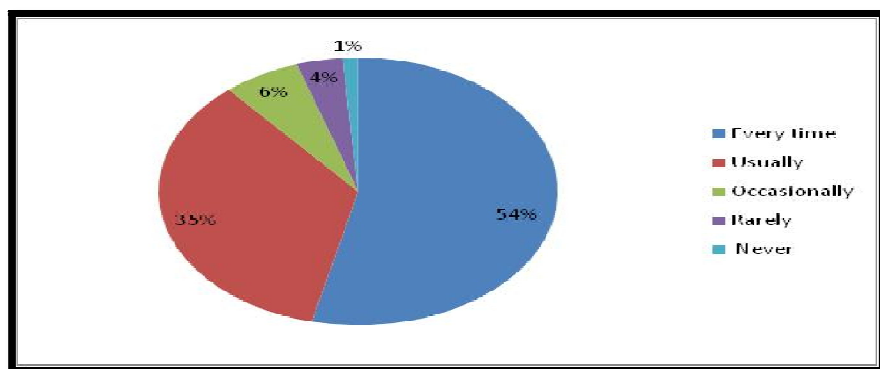


Table No.- 13  
Mentor follow-up the assigned work for you

Mentor ssigned	Frequency	Percentage
Every time	49	61 %
Usually	27	33 %
Occasionally	2	3 %
Rarely	1	1 %
I don't have a mentor	2	2 %

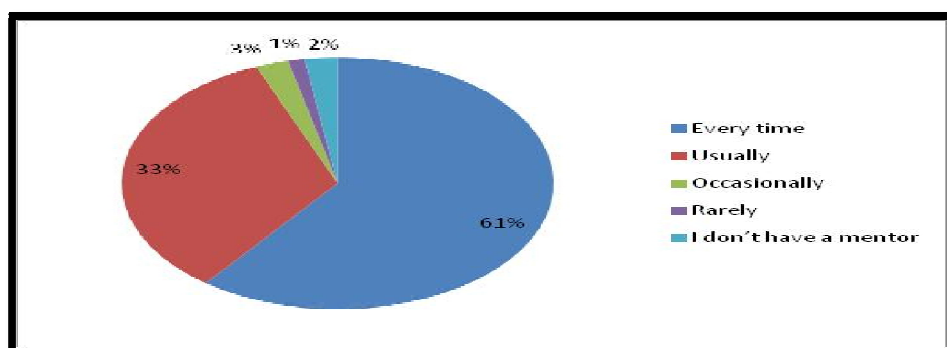


Table No.- 14  
The teachers illustrate the concepts through examples and applications.

Illustration	Frequency	Percentage
Every time	59	73 %
Usually	15	19 %
Occasionally	6	7 %
Rarely	0	0
Never	1	1 %

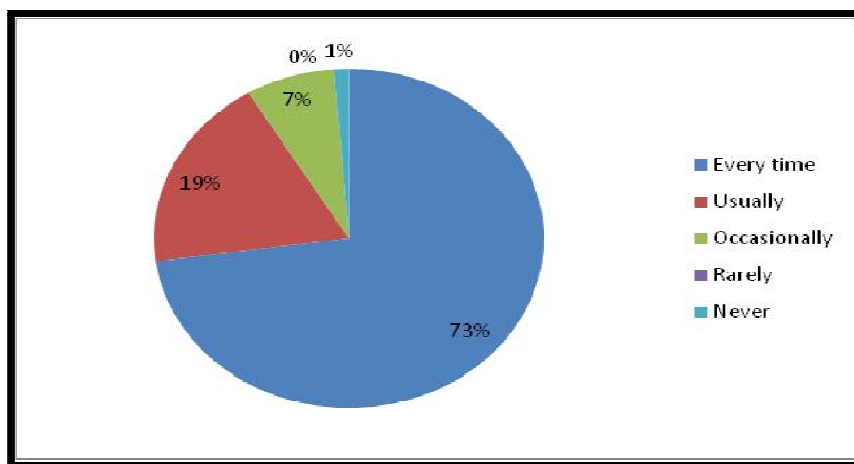


Table No.- 15  
The teachers identify strengths and encourage with providing right level of challenges.

Strengths and Encourage	Frequency	Percentage
Fully	60	74 %
Reasonably	12	15 %
Partially	5	6 %
Slightly	3	4 %
Unable to	1	1 %

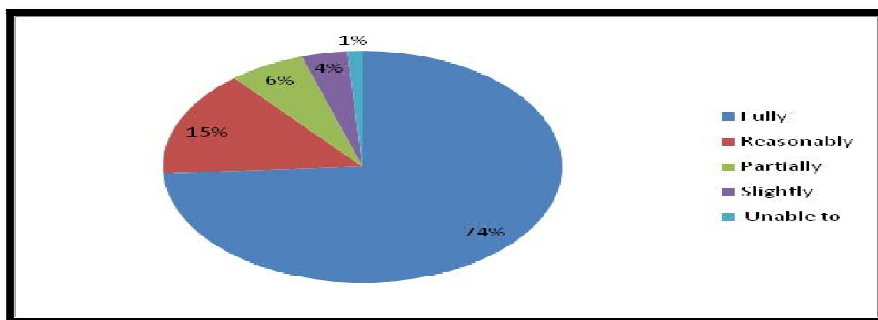


Table No.- 16  
Teachers are able to identify weaknesses and help you to overcome them.

weaknesses	Frequency	Percentage
Every time	46	57 %
Usually	24	30 %
Occasionally	04	05 %
Rarely	03	04 %
Never	03	04 %

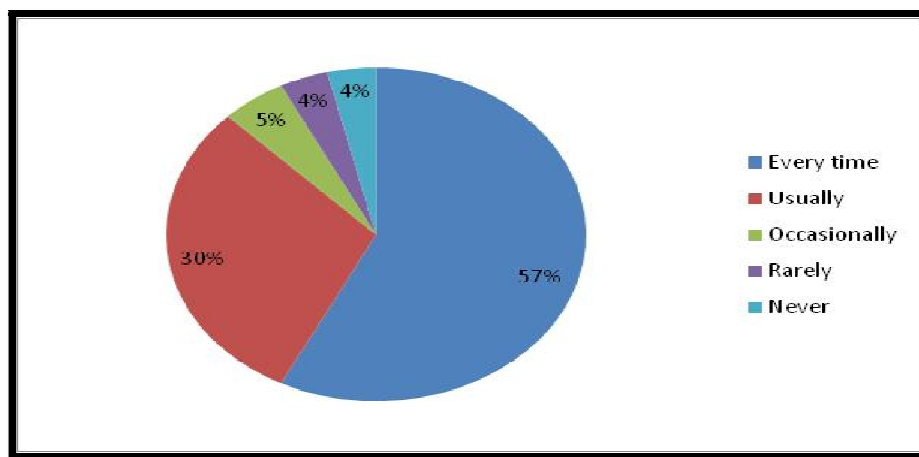


Table No.- 17

The institution makes effort to engage students in the monitoring, review and continuous quality improvement of the teaching learning process.

Quality Improvement	Frequency	Percentage
Strongly agree	40	49 %
Agree	36	46 %
Neutral	3	4 %
Disagree	0	0
Strongly disagree	1	1 %

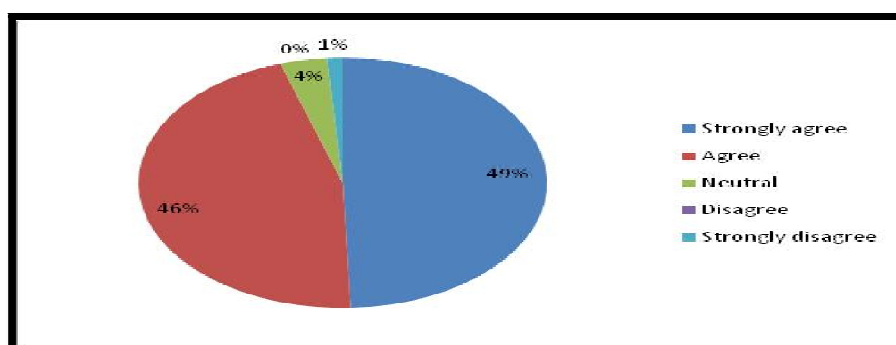


Table No.- 18

Percentage of teachers using ICT tools such as LCD projector, Multimedia, etc. while teaching.

While teaching	Frequency	Percentage
Above	24	30 %
70	38	48 %
50	10	12 %
30	5	6 %
Below	3	4 %

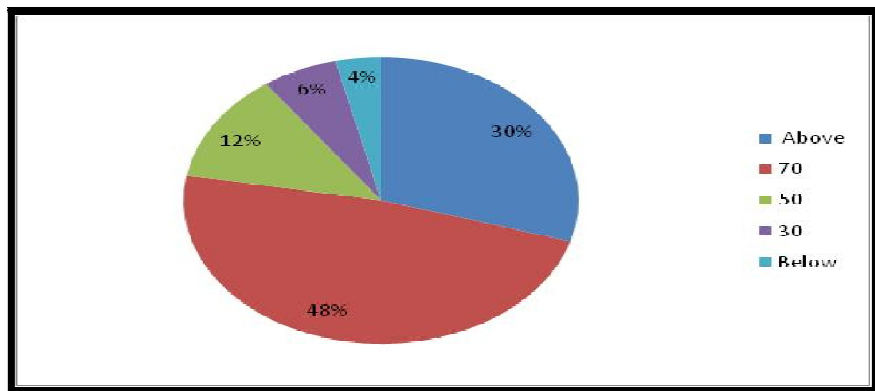


Table No.- 19  
Teachers encourage you to participate in extracurricular activities.

Teachers Encourage	Frequency	Percentage
Strongly agree	46	57 %
Agree	31	40 %
Neutral	2	2 %
Disagree	1	1 %
Strongly disagree	0	0

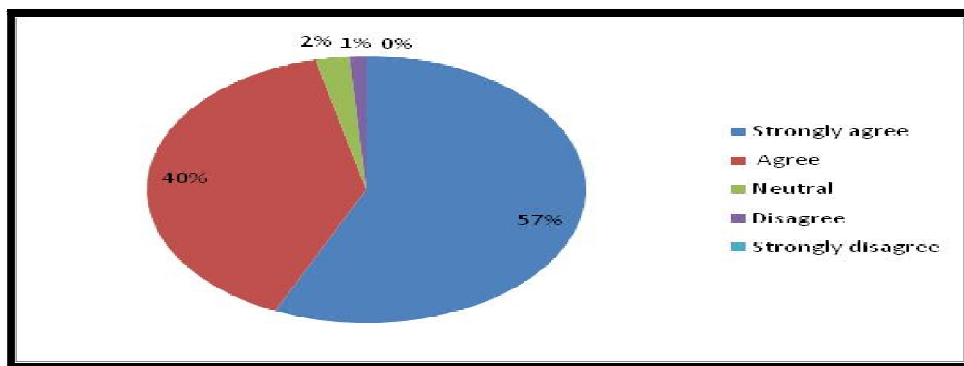
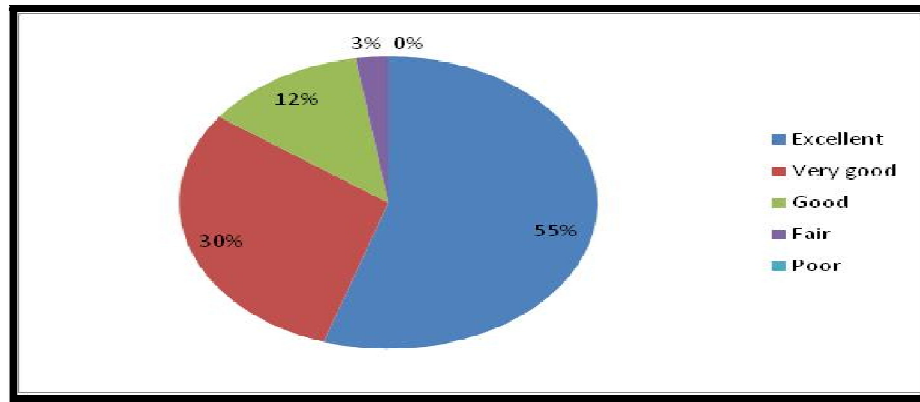


Table No.- 20  
The overall quality of teaching-learning process in your institute.

teaching-learning process	Frequency	Percentage
Excellent	44	55 %
Very good	24	30 %
Good	10	12 %
Fair	02	03 %
Poor	0	0



**Table No: 21**  
**Students' observations/suggestions about TLE**

Particulars	Frequency	Percent
More practical oriented classes is needed	4	5
students field visits and tour will be more	5	6.25
Needed WiFi/internet facilities	6	7.5
Campus interviews and placements to be organised	7	8.75
Timing of the college has to be change	7	8.75
Need to concentrate on weaker students	9	11.25
To teach both Kannada and English medium	7	8.75
Infrastructure/cleanliness	8	10
Need Awareness about competitive examinations	6	7.5
Give more opportunities to students	8	10
Provide the NEP reference books	6	7.5
Teaching and Learning process is very good	7	8.75
Total	80	100.00



