

**Shree Jagadguru Moorusavirmath Vidyavardhak Sangha's**  
**ARTS & COMMERCE COLLEGE FOR WOMEN**  
Jayachamaraj Nagar, Hubballi-580 020

**STUDENTS SATISFACTION SURVEY -2019-20**

**2.7.1 Students satisfaction survey.**

During the period of 2019-20, students satisfaction survey was conducted through offline mode with structured questionnaire In which total 254 samples were taken which is 72 for BA and 182 for B.Com. In all 20 questions were given mandatory answers in the form of objective type. Only one question given to students to write the opinion about the institution. The following results were tabulated through SPSS packages.

**Part –A: Objective Type Responses**

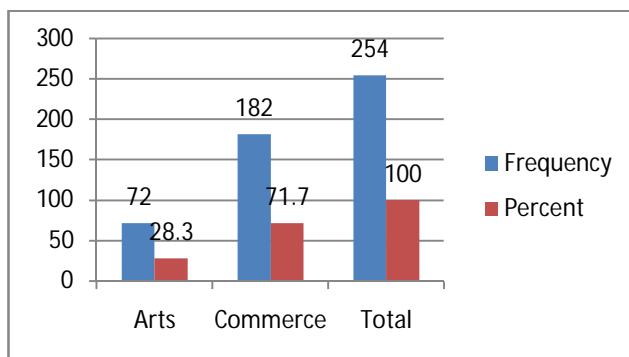
**Table. No: 01**

**Q.No: 02 Students responses currently studying in the programme**

Programme	Frequency	Percent
Arts	72.0	28.3
Commerce	182.0	71.7
Total	254.0	100.0

**Graph. No: 01**

**Q.No: 02 Students responses currently studying in the programme**



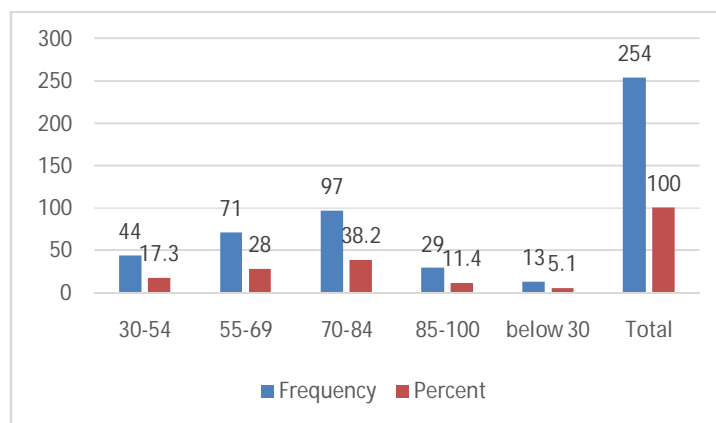
**Table No: 02**

**Q.No: 03 Students opinion about teacherscovered syllabus in the class**

<b>%</b>	<b>Frequency</b>	<b>Percent</b>
<b>30-54</b>	<b>44</b>	<b>17.3</b>
<b>55-69</b>	<b>71</b>	<b>28.0</b>
<b>70-84</b>	<b>97</b>	<b>38.2</b>
<b>85-100</b>	<b>29</b>	<b>11.4</b>
<b>below 30</b>	<b>13</b>	<b>5.1</b>
<b>Total</b>	<b>254</b>	<b>100.0</b>

**Graph.No:02**

**Q.No: 03 Students opinion about teacherscovered syllabus in the class**



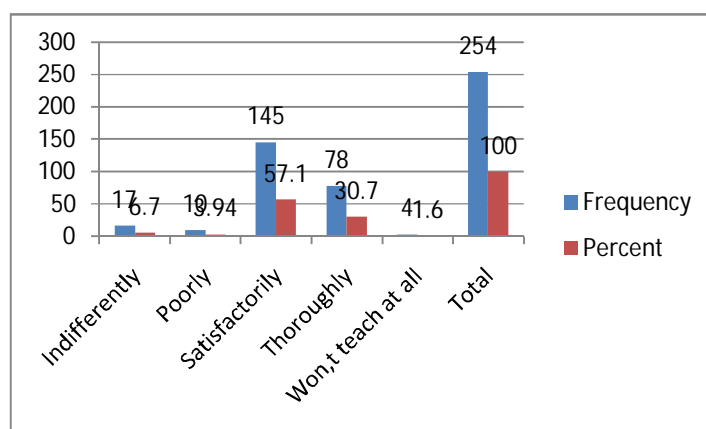
**Table No: 03**

**Q.No: 04 Students opinion about teacher's preparedness of the class**

<b>Particulars</b>	<b>Frequency</b>	<b>Percent</b>
<b>Indifferently</b>	<b>17</b>	<b>6.7</b>
<b>Poorly</b>	<b>10</b>	<b>3.94</b>
<b>Satisfactorily</b>	<b>145</b>	<b>57.1</b>
<b>Thoroughly</b>	<b>78</b>	<b>30.7</b>
<b>Won't teach at all</b>	<b>4</b>	<b>1.6</b>
<b>Total</b>	<b>254</b>	<b>100</b>

**Graph. No: 03**

**Q.No: 04 Students opinion about teacher's preparedness of the class**



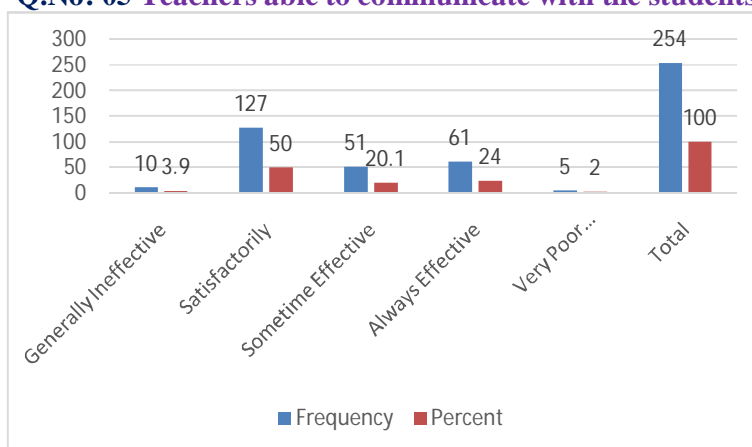
**Table. No: 04**

**Q.No: 05 Teachers able to communicate with the students**

Particulars	Frequency	Percent
Generally Ineffective	10	3.9
Satisfactorily	127	50.0
Sometime Effective	51	20.1
Always Effective	61	24.0
Very Poor Communication	5	2.0
Total	254	100.0

**Graph.No:04**

**Q.No: 05 Teachers able to communicate with the students**



**Table No: 05**

**Q.No: 06 Teachers approach with the students**

Particulars	Frequency	Percent
Fair	36	14.2
Good	132	52.0
very Good	42	16.5
Excellent	43	16.9
Poor	1	0.4
Total	254	100.0

Graph. No:05

Q.No: 06 Teachers approach with the students

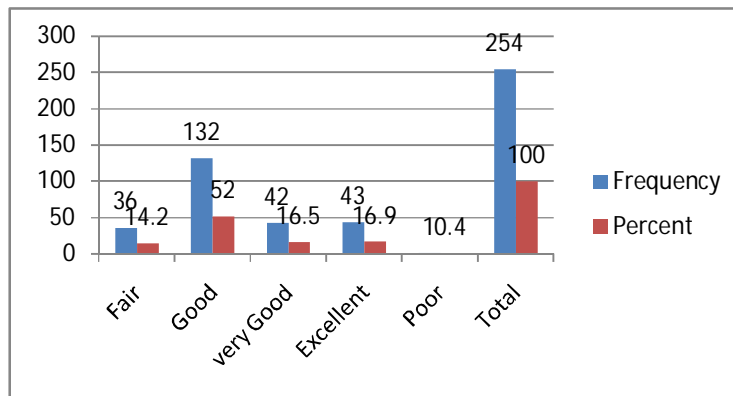


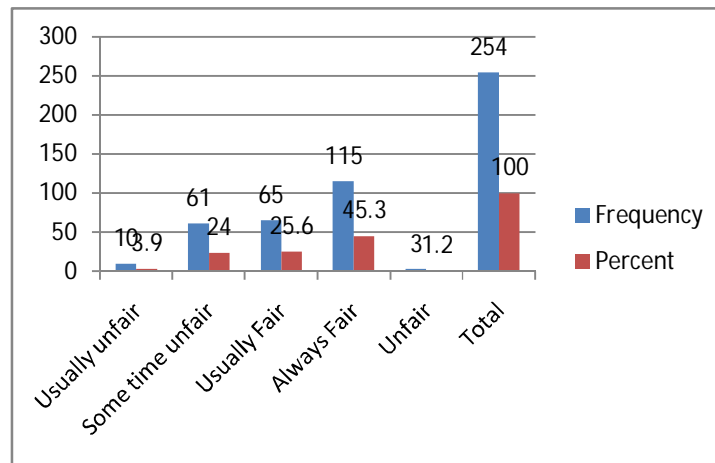
Table No: 06

Q.No: 07 Students opinion about internal evaluation processes by the teachers

Particulars	Frequency	Percent
Usually unfair	10	3.9
Some time unfair	61	24.0
Usually Fair	65	25.6
Always Fair	115	45.3
Unfair	3	1.2
Total	254	100.0

Graph. No: 06

**Q.No: 07 Students opinion about internal evaluation processes by the teachers**



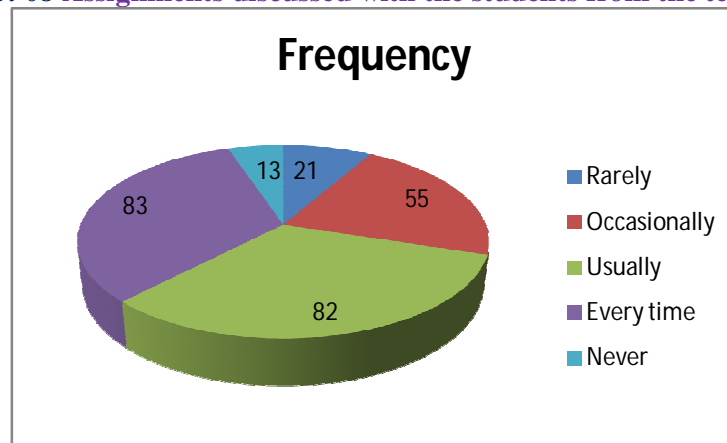
**Table No: 07**

**Q.No: 08 Assignments discussed with the students from the teachers**

Particulars	Frequency	Percent
Rarely	21	8.3
Occasionally	55	21.7
Usually	82	32.3
Every time	83	32.7
Never	13	5.1
Total	254	100.0

**Chart No:01**

**Q.No: 08 Assignments discussed with the students from the teachers**



**Table. No: 08**

**Q.No: 09 The institute actively interest to promote students activities**

Particulars	Frequency	Percent
Rarely	22	8.7
Sometimes	82	32.3
Often	37	14.6
Regularly	96	37.8
Never	17	6.7
Total	254	100.0

Graph No:08

Q.No: 09 The institute actively interest to promote students activities

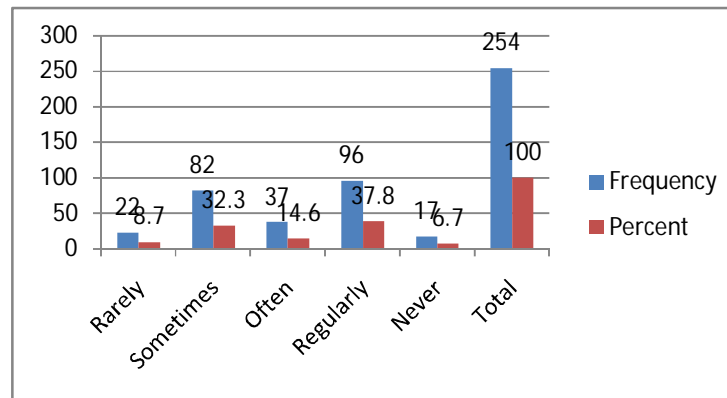


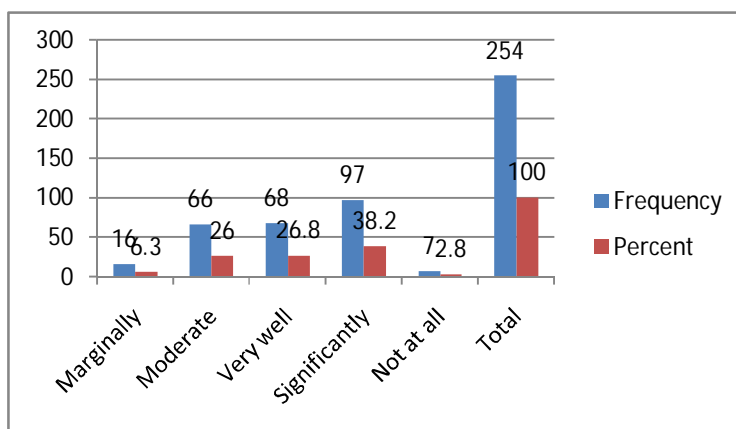
Table No: 09

Q.No: 10 Students opinion about teaching and mentoring process in the institute

Particulars	Frequency	Percent
Marginally	16	6.3
Moderate	66	26.0
Very well	68	26.8
Significantly	97	38.2
Not at all	7	2.8
Total	254	100.0

Graph No: 09

**Q.No: 10 Students opinion about teaching and mentoring process in the institute**



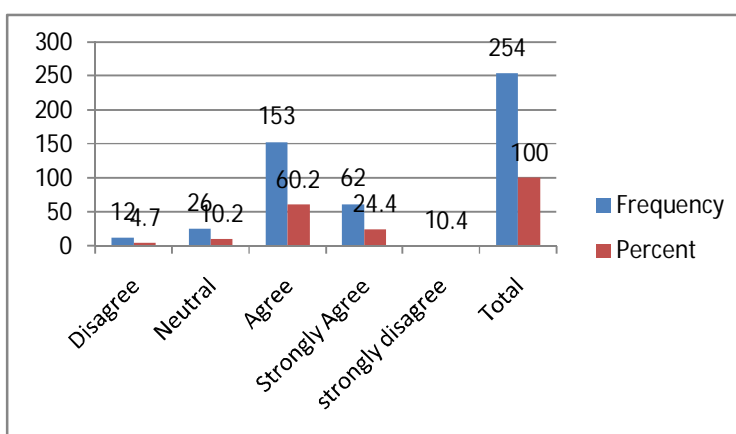
**Table No: 10**

**Q.No: 11 The institution provides multiple opportunities to the students**

Particulars	Frequency	Percent
Disagree	12	4.7
Neutral	26	10.2
Agree	153	60.2
Strongly Agree	62	24.4
strongly disagree	1	0.4
Total	254	100.0

**Graph No: 10**

**Q.No: 11 The institution provides multiple opportunities to the students**



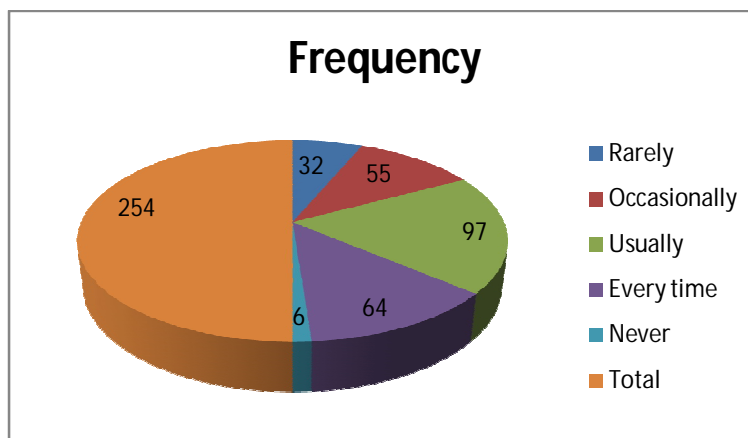
**Table No: 11**

**Q.No: 12 Teachers inform you about your expected competencies**

Particulars	Frequency	Percent
Rarely	32	12.6
Occasionally	55	21.7
Usually	97	38.2
Every time	64	25.2
Never	6	2.4
Total	254	100.0

**Chart No: 02**

**Q.No: 12 Teachers inform you about your expected competencies**



**Table No: 12**

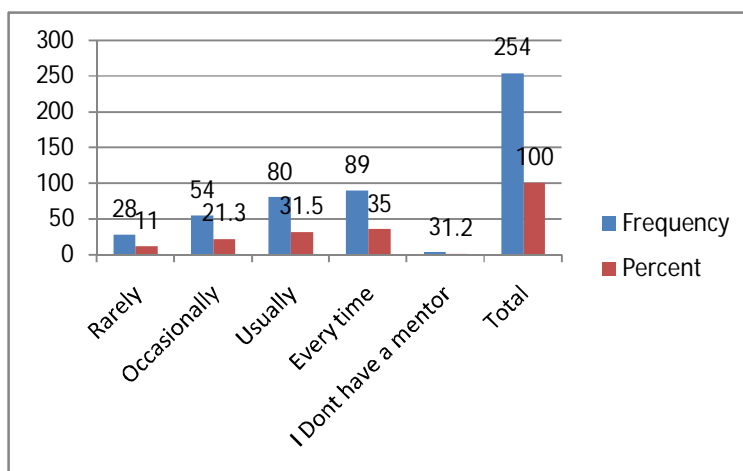
**Q.No: 13 Mentor follow-up the assigned work for you**

Particulars	Frequency	Percent
Rarely	28	11.0
Occasionally	54	21.3
Usually	80	31.5
Every time	89	35.0
I Don't have a mentor	3	1.2
Total	254	100.0

**Graph No:12**



**Q.No: 13 Mentor follow-up the assigned work for you**



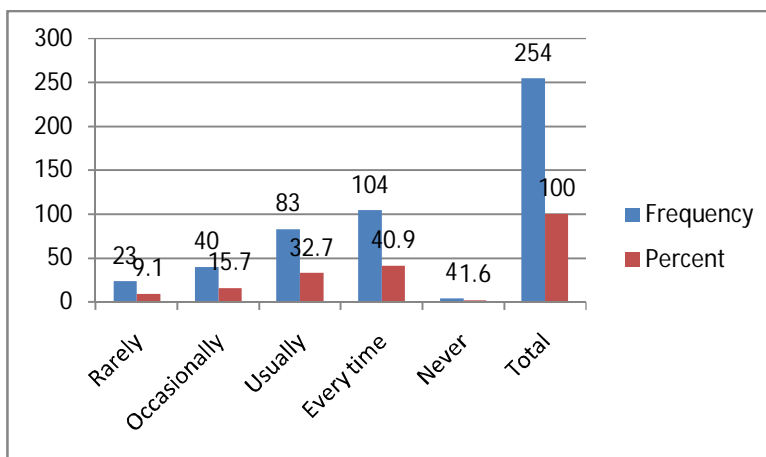
**Table No: 13**

**Q.No: 14 The teachers illustrate the concepts through examples to the students**

Particulars	Frequency	Percent
Rarely	23	9.1
Occasionally	40	15.7
Usually	83	32.7
Every time	104	40.9
Never	4	1.6
Total	254	100.0

**Graph No:13**

**Q.No: 14 The teachers illustrate the concepts through examples to the students**



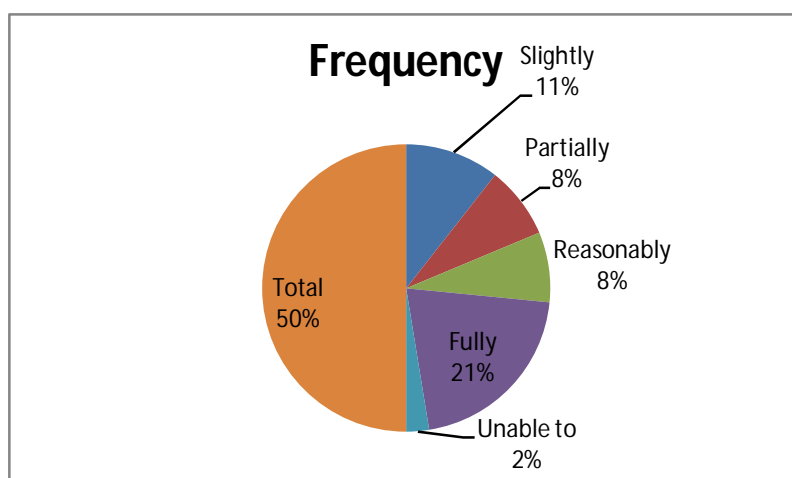
**Table No: 14**

**Q.No: 15 The teacher identify and encourages for you**

Particulars	Frequency	Percent
Slightly	54	21.3
Partially	41	16.1
Reasonably	40	15.7
Fully	106	41.7
Unable to	13	5.1
Total	254	100.0

**Chart No:03**

**Q.No: 15 The teacher identify and encourages for you**



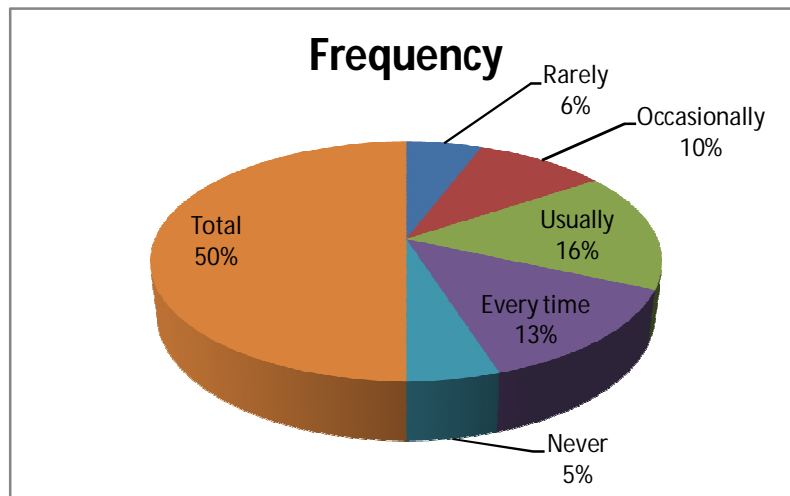
**Table No: 15**

**Q.No: 16 Teachers identify your weaknesses**

Particulars	Frequency	Percent
Rarely	29	11.4
Occasionally	50	19.7
Usually	82	32.3
Every time	68	26.8
Never	25	9.8
Total	254	100.0

**Chart No:04**

**Q.No: 16 Teachers identify your weaknesses**



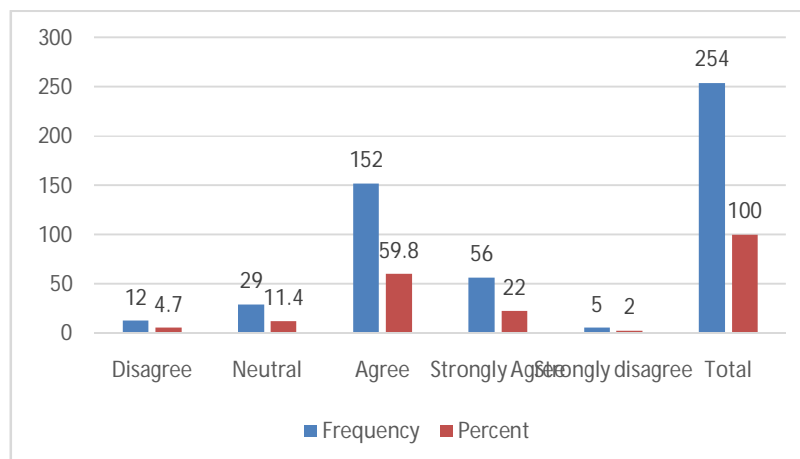
**Table No: 16**

**Q.No: 17 Students engages in continuous quality improvements**

Particulars	Frequency	Percent
Disagree	12	4.7
Neutral	29	11.4
Agree	152	59.8
Strongly Agree	56	22.0
Strongly disagree	5	2.0
Total	254	100.0

**Graph.No:16**

**Q.No: 17 Students engages in continuous quality improvements**



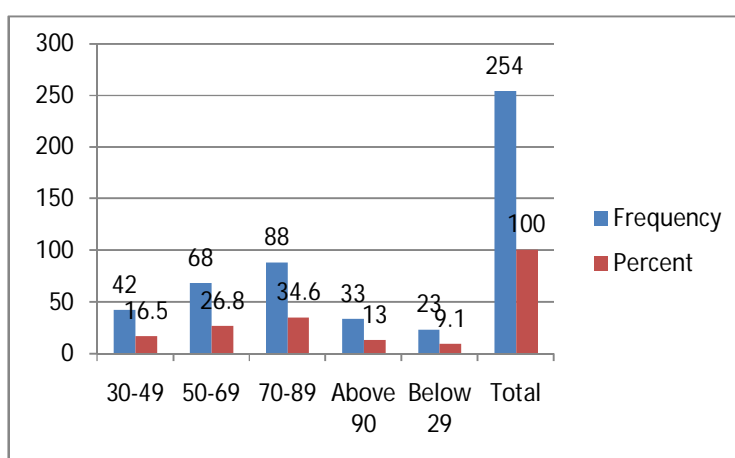
**Table.No:17**

**Q.No: 18 Percentage of teachers use ICT tools**

<b>%</b>	<b>Frequency</b>	<b>Percent</b>
<b>30-49</b>	<b>42</b>	<b>16.5</b>
<b>50-69</b>	<b>68</b>	<b>26.8</b>
<b>70-89</b>	<b>88</b>	<b>34.6</b>
<b>Above 90</b>	<b>33</b>	<b>13.0</b>
<b>Below 29</b>	<b>23</b>	<b>9.1</b>
<b>Total</b>	<b>254</b>	<b>100.0</b>

**Graph.No:17**

**Q.No: 18 Percentage of teachers use ICT tools**



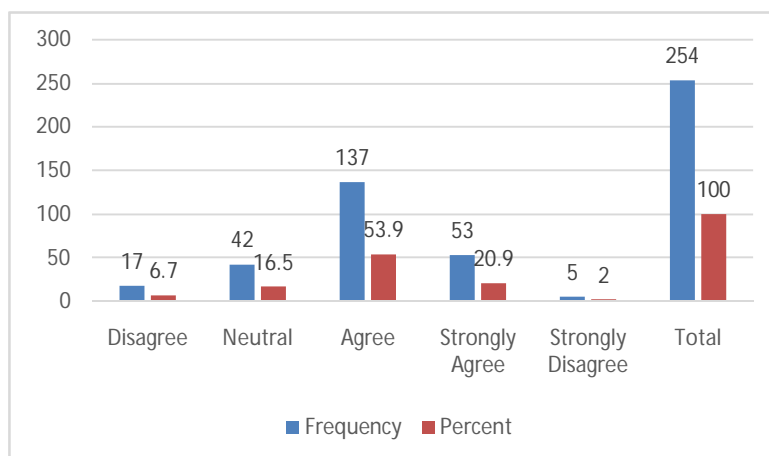
**Table No: 18**

**Q.No: 20 Responses of the quality of teaching and learning process in the institute**

<b>Particulars</b>	<b>Frequency</b>	<b>Percent</b>
<b>Disagree</b>	<b>17</b>	<b>6.7</b>
<b>Neutral</b>	<b>42</b>	<b>16.5</b>
<b>Agree</b>	<b>137</b>	<b>53.9</b>
<b>Strongly Agree</b>	<b>53</b>	<b>20.9</b>
<b>Strongly Disagree</b>	<b>5</b>	<b>2.0</b>
<b>Total</b>	<b>254</b>	<b>100.0</b>

**Graph No: 18**

**Q.No: 20 Responses of the quality of teaching and learning process in the institute**



**Part –B: Student's observations/suggestions**

**Table No: 19**

**Q.No: 21 Student's observations/suggestions about TLE**

Particulars	Frequency	Percent
To change college timings	18	7.0
Give more preference to extra curriculum activities	18	7.0
Needed WiFi/internet facilities	18	7.0
Infrastructure/cleanliness	19	7.4
Use ICT tools in the class	21	8.2
To teach both Kannada and English medium	22	8.6
Need canteen facilities	25	9.7
Provide more books to students	34	13.2
Need Awareness about competitive examinations	37	14.4
Teaching and Learning process is very good	42	16.3
Total	254	100.0

**Table No: 20**  
**Consolidated Students Satisfaction Survey**

	4	3	2	1	0
<b>Q.No: 03</b>	<b>30-54</b>	<b>55-69</b>	<b>70-84</b>	<b>85-100</b>	<b>Below 30</b>
<b>Students</b>	<b>44</b>	<b>71</b>	<b>97</b>	<b>29</b>	<b>13</b>
<b>%</b>	<b>17.3</b>	<b>28.0</b>	<b>38.2</b>	<b>11.4</b>	<b>5.1</b>
<b>Q.No: 04</b>	<b>Indifferently</b>	<b>Poorly</b>	<b>Satisfactorily</b>	<b>Thoroughly</b>	<b>Won't teach at all</b>
<b>Students</b>	<b>17</b>	<b>10</b>	<b>145</b>	<b>78</b>	<b>4</b>
<b>%</b>	<b>6.7</b>	<b>3.94</b>	<b>57.1</b>	<b>30.7</b>	<b>1.6</b>
<b>Q.No: 05</b>	<b>Generally Ineffective</b>	<b>Satisfactorily</b>	<b>Sometime Effective</b>	<b>Always Effective</b>	<b>Very Poor Communication</b>
<b>Students</b>	<b>10</b>	<b>127</b>	<b>51</b>	<b>61</b>	<b>5</b>
<b>%</b>	<b>3.9</b>	<b>50.0</b>	<b>20.1</b>	<b>24.0</b>	<b>2.0</b>
<b>Q.No: 06</b>	<b>Fair</b>	<b>Good</b>	<b>very Good</b>	<b>Excellent</b>	<b>Poor</b>
<b>Students</b>	<b>36</b>	<b>132</b>	<b>42</b>	<b>43</b>	<b>1</b>
<b>%</b>	<b>14.2</b>	<b>52.0</b>	<b>16.5</b>	<b>16.9</b>	<b>0.4</b>
<b>Q.No: 07</b>	<b>Usually unfair</b>	<b>Some time unfair</b>	<b>Usually Fair</b>	<b>Always Fair</b>	<b>Unfair</b>
<b>Students</b>	<b>10</b>	<b>61</b>	<b>65</b>	<b>115</b>	<b>3</b>
<b>%</b>	<b>3.9</b>	<b>24.0</b>	<b>25.6</b>	<b>45.3</b>	<b>1.2</b>
<b>Q.No: 08</b>	<b>Rarely</b>	<b>Occasionally</b>	<b>Usually</b>	<b>Every time</b>	<b>Never</b>
<b>Students</b>	<b>21</b>	<b>55</b>	<b>82</b>	<b>83</b>	<b>13</b>
<b>%</b>	<b>8.3</b>	<b>21.7</b>	<b>32.3</b>	<b>32.7</b>	<b>5.1</b>
<b>Q.No: 09</b>	<b>Rarely</b>	<b>Sometimes</b>	<b>Often</b>	<b>Regularly</b>	<b>Never</b>

Students	22	82	37	96	17
%	8.7	32.3	14.6	37.8	6.7
Q.No: 10	Marginally	Moderate	Very well	Significantly	Not at all
Students	16	66	68	97	7
%	6.3	26.0	26.8	38.2	2.8
Q.No: 11	Disagree	Neutral	Agree	Strongly Agree	strongly disagree
Students	12	26	153	62	1
%	4.7	10.2	60.2	24.4	0.4
Q.No: 12	Rarely	Occasionally	Usually	Every time	Never
Students	32	55	97	64	6
%	12.6	21.7	38.2	25.2	2.4
Q.No: 13	Rarely	Occasionally	Usually	Every time	I Don't have a mentor
Students	28	54	80	89	3
%	11.0	21.3	31.5	35.0	1.2
Q.No: 14	Rarely	Occasionally	Usually	Every time	Never
Students	23	40	83	104	4
%	9.1	15.7	32.7	40.9	1.6
Q.No: 15	Slightly	Partially	Reasonably	Fully	Unable to
Students	54	41	40	106	13
%	21.3	16.1	15.7	41.7	5.1
Q.No:	Rarely	Occasionally	Usually	Every time	Never

<b>16</b>					
<b>Students</b>	<b>29</b>	<b>50</b>	<b>82</b>	<b>68</b>	<b>25</b>
<b>%</b>	<b>11.4</b>	<b>19.7</b>	<b>32.3</b>	<b>26.8</b>	<b>9.8</b>
<b>Q.No: 17</b>	<b>Disagree</b>	<b>Neutral</b>	<b>Agree</b>	<b>Strongly Agree</b>	<b>Strongly disagree</b>
<b>Students</b>	<b>12</b>	<b>29</b>	<b>152</b>	<b>56</b>	<b>5</b>
<b>%</b>	<b>4.7</b>	<b>11.4</b>	<b>59.8</b>	<b>22.0</b>	<b>2.0</b>
<b>Q.No: 18</b>	<b>30-49</b>	<b>50-69</b>	<b>70-89</b>	<b>Above 90</b>	<b>Below 29</b>
<b>Students</b>	<b>42</b>	<b>68</b>	<b>88</b>	<b>33</b>	<b>23</b>
<b>%</b>	<b>16.5</b>	<b>26.8</b>	<b>34.6</b>	<b>13.0</b>	<b>9.1</b>
<b>Q.No: 20</b>	<b>Disagree</b>	<b>Neutral</b>	<b>Agree</b>	<b>Strongly Agree</b>	<b>Strongly Disagree</b>
<b>Students</b>	<b>17</b>	<b>42</b>	<b>137</b>	<b>53</b>	<b>5</b>
<b>%</b>	<b>6.7</b>	<b>16.5</b>	<b>53.9</b>	<b>20.9</b>	<b>2.0</b>